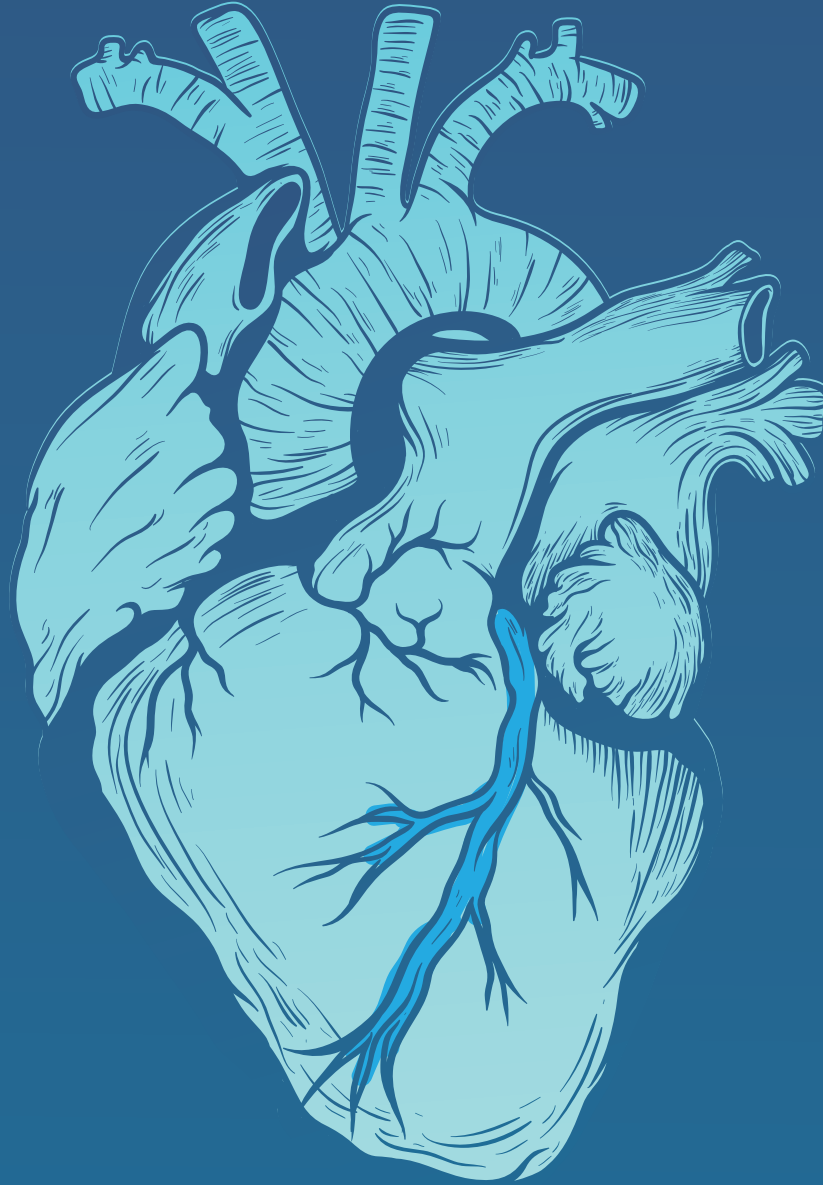


MAGICTOUCH™

SIROLIMUS COATED BALLOON CATHETER



SIROLIMUS

MAGICTOUCH

SIROLIMUS DRUG COATED BALLOON

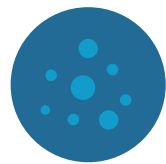
MagicTouch is a Sirolimus Drug Coated Balloon Catheter for the treatment of the Coronary Artery Disease, indicated for In-Stent Restenosis, Small Vessels and Bifurcation Lesions.

NANOLUTE™ TECHNOLOGY

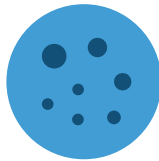
A nano carrier based effective drug delivery technology for coronary and vascular interventions.

An encapsulation technology by using biocompatible excipients for longer retention of drug in tissue.

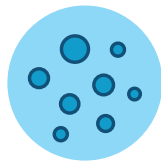
A technology that creates larger surface area to volume ratio resulting in better bio-availability of drug.



Drug Nano Particle Creation



Drug Carrier Nano Particle Creation



Nano Carrier Formulation with Nano sized Drug Particles

Dedicated Spray Coating System



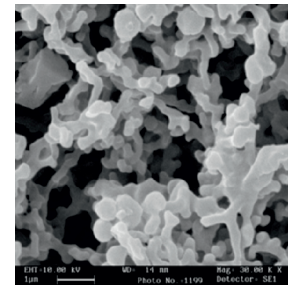
Drug Coated Balloon



Drug (inside)
Excipient (outside)

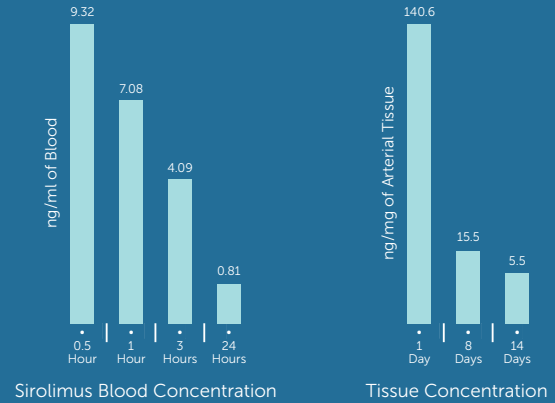
+ ADVANTAGES

- Uniform coating surface
- Reduce in-transit loss of drug
- Faster uptake of drug in tissue on delivery
- Drug released on dissolution of nano carrier
- Programmable drug release from surface of device



+ DRUG

Drug: Sirolimus
Dose: 1.27 μ g/mm²
Nature: Less Lipophilic
Action: Cytostatic
Therapeutic Range: Wide

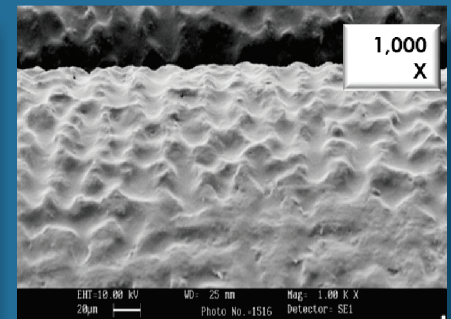
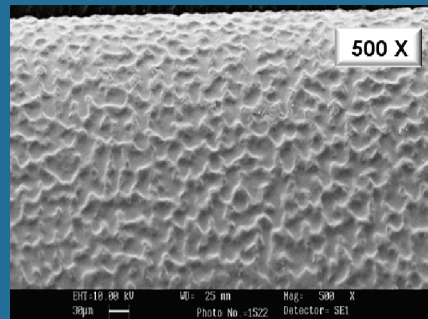


PHARMACOKINETIC STUDY

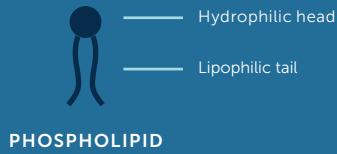
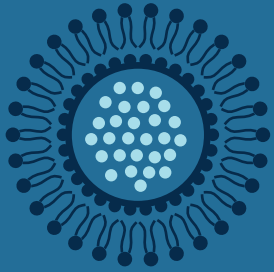


+ COATING

Nature: Uniform
Technology: Nanolute™
Position: Inflated



+ CARRIER

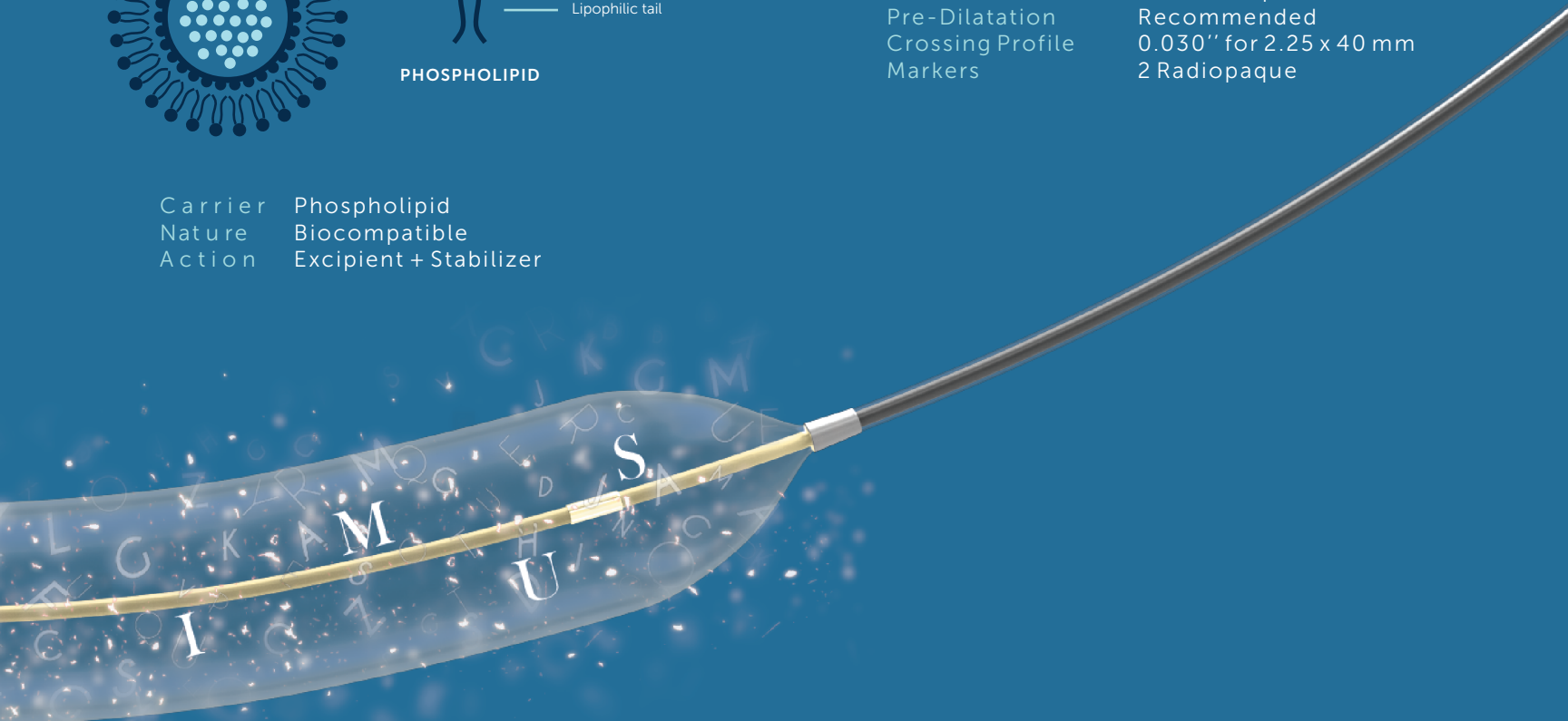


Carrier	Phospholipid
Nature	Biocompatible
Action	Excipient + Stabilizer

+ BALLOON

Balloon
Pre-Dilatation
Crossing Profile
Markers

Semi-compliant
Recommended
0.030" for 2.25 x 40 mm
2 Radiopaque

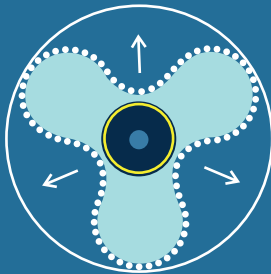


WRAPPED
BALLOON



The MagicTouch
SCB is delivered
to the target side

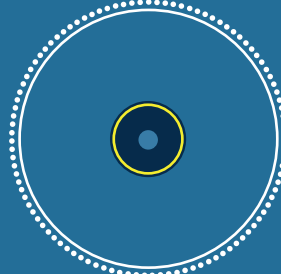
FOLDS
UNWRAPPING



10 seconds

The balloon unwraps
to expose the
Nanolute™ coating

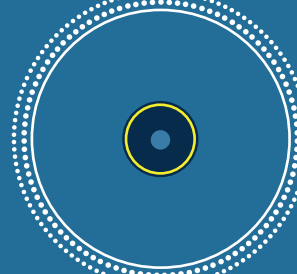
BALLOON INFLATED
AND ELUTING



15 seconds

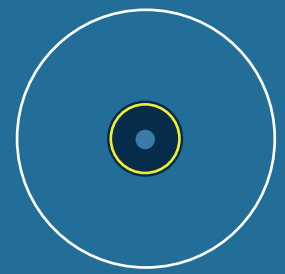
Bio-excipients facilitate
transportation of
sirolimus molecules
across the vessel wall

ELUTION



Drug elution takes
place within
30-60 seconds

DRUG UPTAKE
COMPLETED



60 seconds

IMPLANTATION TECHNIQUE OF MAGICTOUCH

FOLDED BALLOON



HANDLE WITH CARE

Do not rub the coated balloon
Do not use any protective/insertion sheath to advance the SCB through the introducer sheath and/or haemostatic valve



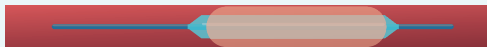
LESION



PRE-DILATATION



SCB



PRE-DILATATION RECOMMENDED IN ALL CASES

For pre-dilatation in all cases use a standard balloon (approx. 0.5mm smaller than RVD)
Choose a SCB with nominal size equal to reference diameter.



Duration time 30-60 sec



DRUG RELEASE WITHIN 60 SECONDS

Longer inflation times are possible at discretion of operator - to pursue optimal mechanical dilatation - but do not lead to further drug release.



LESION 1, SCB 1



LESION 2, SCB 2

ONE DRUG-ELUTING BALLOON FOR EACH LESION

Each lesion should be addressed with a separate balloon.
In longer lesions SCB overlapping is indicated



IF A STENT IS PRESENT, SIZE OF BALLOON SHOULD BE GREATER THAN STENT BY 0.5MM ON EACH SIDE.



TECHNICAL SPECIFICATIONS

DRUG / EXCIPIENT

DRUG	Sirolimus
DRUG DOSE	180µg on 3.00 x 15 mm (1.27 µg/mm ²)
DRUG CARRIER	Phospholipid Based Excipient

BALLOON

BALLOON MATERIAL	Polyamide Blend
CATHETER DESIGN	Rapid Exchange (Rx) Design

DELIVERY SYSTEM

Shaft Diameter - Proximal	1.7 F	Rated Burst Pressure	16 bar (14 bar for 4.00 / 25 to 40 mm)
Shaft Diameter - Distal	2.5 F	Guiding Catheter Compatibility	5F (0.056") for all sizes
Usable Catheter Length	140 cm	Guidewire Compatibility	0.014" maximum recommended
Tip Profile	0.016"		
Nominal Pressure	6 bar		

ORDERING INFORMATION

Dia/Length	10 mm	15 mm	20 mm	25 mm	30 mm	35 mm	40 mm
1.50 mm	CMT15010	CMT15015	CMT15020	CMT15025	CMT15030	CMT15035	CMT15040
2.00 mm	CMT20010	CMT20015	CMT20020	CMT20025	CMT20030	CMT20035	CMT20040
2.25 mm	CMT22510	CMT22515	CMT22520	CMT22525	CMT22530	CMT22535	CMT22540
2.50 mm	CMT25010	CMT25015	CMT25020	CMT25025	CMT25030	CMT25035	CMT25040
2.75 mm	CMT27510	CMT27515	CMT27520	CMT27525	CMT27530	CMT27535	CMT27540
3.00 mm	CMT30010	CMT30015	CMT30020	CMT30025	CMT30030	CMT30035	CMT30040
3.50 mm	CMT35010	CMT35015	CMT35020	CMT35025	CMT35030	CMT35035	CMT35040
4.00 mm	CMT40010	CMT40015	CMT40020	CMT40025	CMT40030	CMT40035	CMT40040



CONCEPT MEDICAL

USA OFFICE:

6555 NW 36TH Street, Suite 204 Miami, FL 33166 USA

INDIA OFFICE:

Office No. 1-3, Silver Palm II, Opp. Sneh Milan Garden
Kadampalli, Nanpura, Surat-395001. Gujarat-INDIA

Email: contact@conceptmedicals.com

Web: www.conceptmedicals.com



Nanolute and MagicTouch are registered trademarks or trademarks of Concept Medical in India, USA and other countries.

The product and its technology is protected by anyone of US9901662B2, US8778013B2, US8178379B2, US8529983, US8585642 US20140107615, WO2011089620, WO2011089618, WO2011086574, Japan, China and other countries.

NOT AVAILABLE FOR SALE IN THE UNITED STATES AND CERTAIN OTHER COUNTRIES